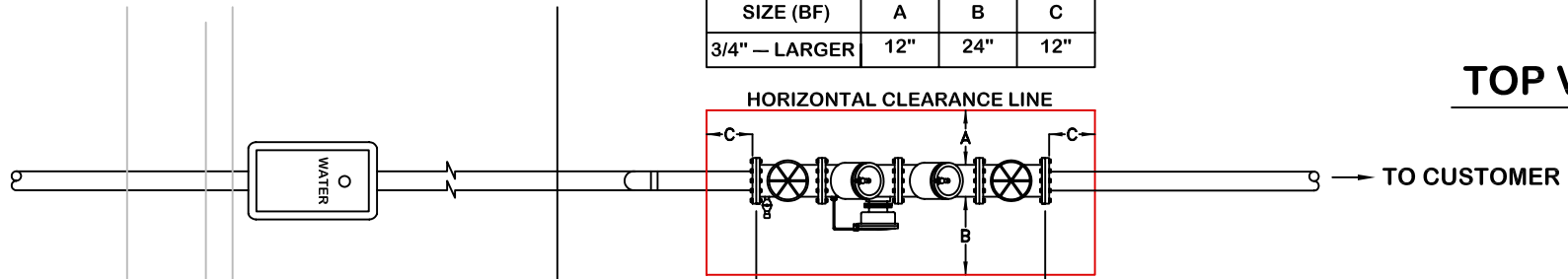


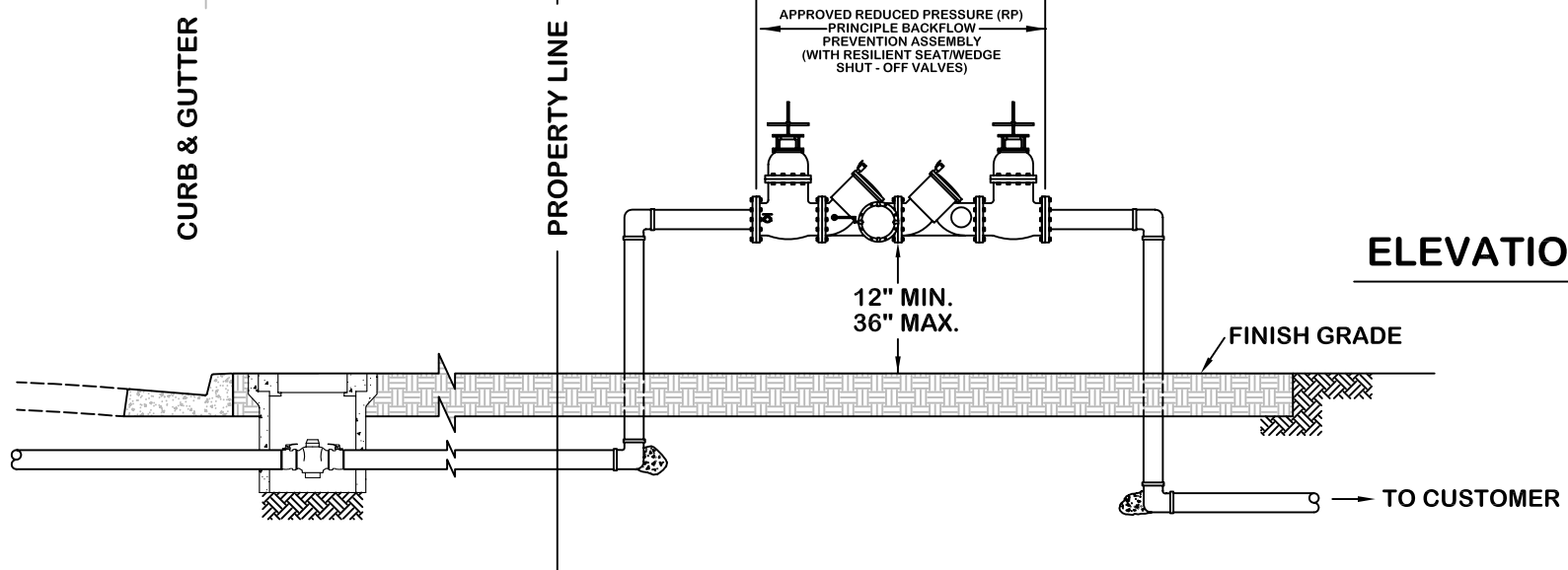
MINIMUM CLEARANCE SCHEDULE

SIZE (BF)	A	B	C
3/4" – LARGER	12"	24"	12"

TOP VIEW



ELEVATION VIEW



NOTES:

1. FOR LIST OF APPROVED BACKFLOW PREVENTION DEVICES (BF), PLEASE CONTACT (818) 548-3962 OR (818) 551-6955. NEW DEVICES MUST BE INSPECTED AND TESTED IMMEDIATELY AFTER INSTALLATION.
2. NO CONNECTIONS OR TEES ARE PERMITTED BETWEEN THE WATER METER AND BACKFLOW PREVENTER POINT OF CONNECTION.
3. PRIOR TO INSTALLATION OF THE ASSEMBLY, THE WATER DEPARTMENT WILL BE AVAILABLE TO BRIEFLY TURN ON THE SERVICE FOR PURPOSES OF FLUSHING THE SERVICE ONLY.
4. DRAIN IS TO BE PROVIDED (WHERE NEEDED) FOR RP ASSEMBLIES WITH SUFFICIENT AIR GAP BETWEEN THE DEVICE AND THE TOP OF THE DRAIN.
5. ALL INSTALLED DEVICES MUST BE TESTED ANNUALLY.

**GLENDALE WATER & POWER
CITY OF GLENDALE
CALIFORNIA**

**INSTALLATION OF
BACKFLOW PREVENTION ASSEMBLY**

DES: LG
D: LG
T:
C:

SCALE: NONE
DATE: 02/19/09
APP: RSN

SHEET NO. 1 OF 1

6528-A